

HOW TO INSTALL ACCESS PANELS



1. Frame the opening.



2. Mount Seamless™ surround with drywall screws.



3. Mounted frame.



4. Install drywall and place access panel in opening.

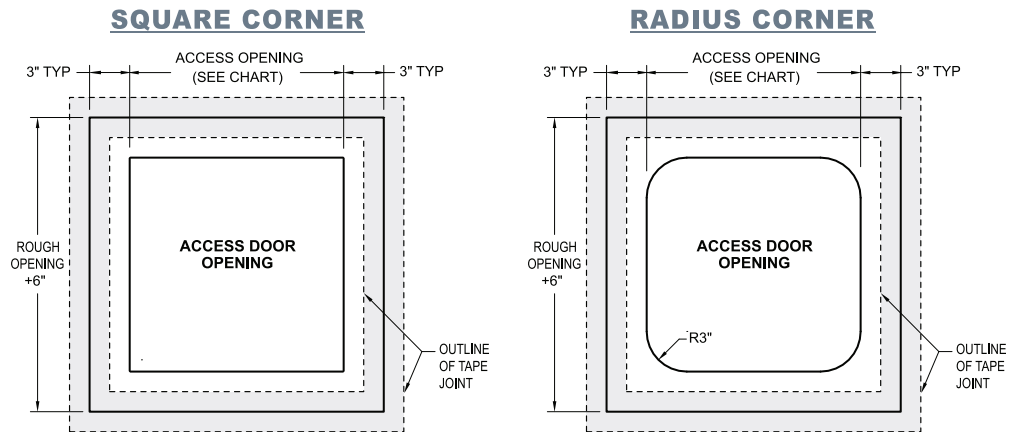


5. Tape and apply drywall compound.

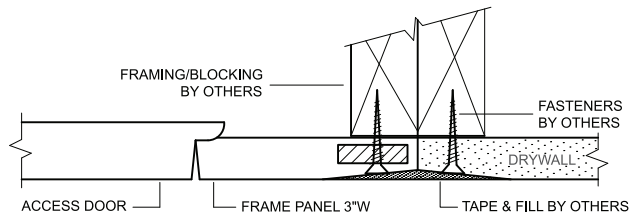


6. Apply desired finish.

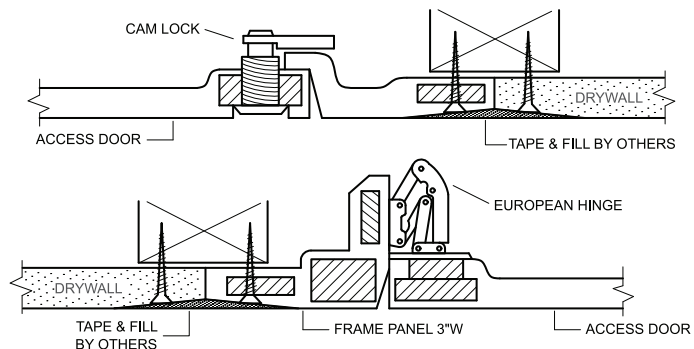
General Drawing Pop-Out or Hinged



Pop-Out Specification



Hinged Specification



Designed for both wall and ceiling applications, the hinged **Seamless™** Panel by **Castle** can be used where a locked door is needed but style must still be maintained. The hinged panel is great for use in ceiling applications where there is no space to push a door up, and in wall applications when access to plumbing and electrical is needed.

- The **Seamless™** Hinged Access Panel and Pop-out Panel consists of a frame door with concealed hinges and a cam or key lock.
- Round Pop-out Panel available in 5 sizes.
- **Neoprene Gasket** available for all panels upon request.
- These panels require extra reinforcement and a crate or pallet to ship.
- Ships directly from the manufacturing plant in Concord, ON Canada.

SEAMLESS PANELS TECHNICAL DATA	
Shell Thickness	1/8" to 3/16"
Fastener Test Pull Out (wood stud)	525 lb avg.
Fastener Test Pull Out (metal stud)	215 lb avg.
Fastener Push Through Test	350 lb avg.
Fuel Contribution (ASTM E84-80)	0
Flame Spread (ASTM E84-80)	0
Smoke Index (ASTM E84-80)	0
Combustion (ASTM E84-80)	Non-combustible
Class A Non-Rated	—

DEALERS/DISTRIBUTORS

CASTLE ACCESS PANELS & FORMS INC.
173 Adesso Dr. Unit 2, Concord, ON L4K 3C3, Canada
www.CastleAccessPanels.com

Phone: (905)738-8089
Fax: (905)760-9234
Email: inquiries@castleaccesspanels.com