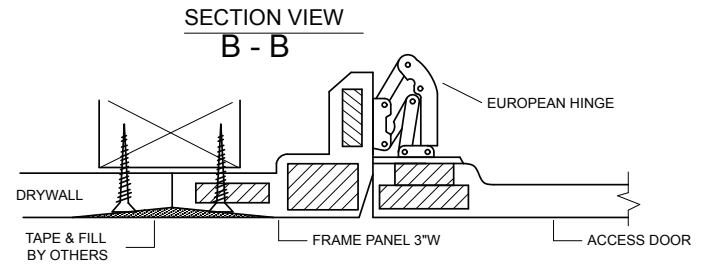
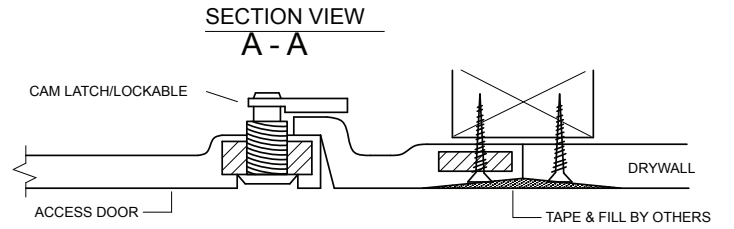
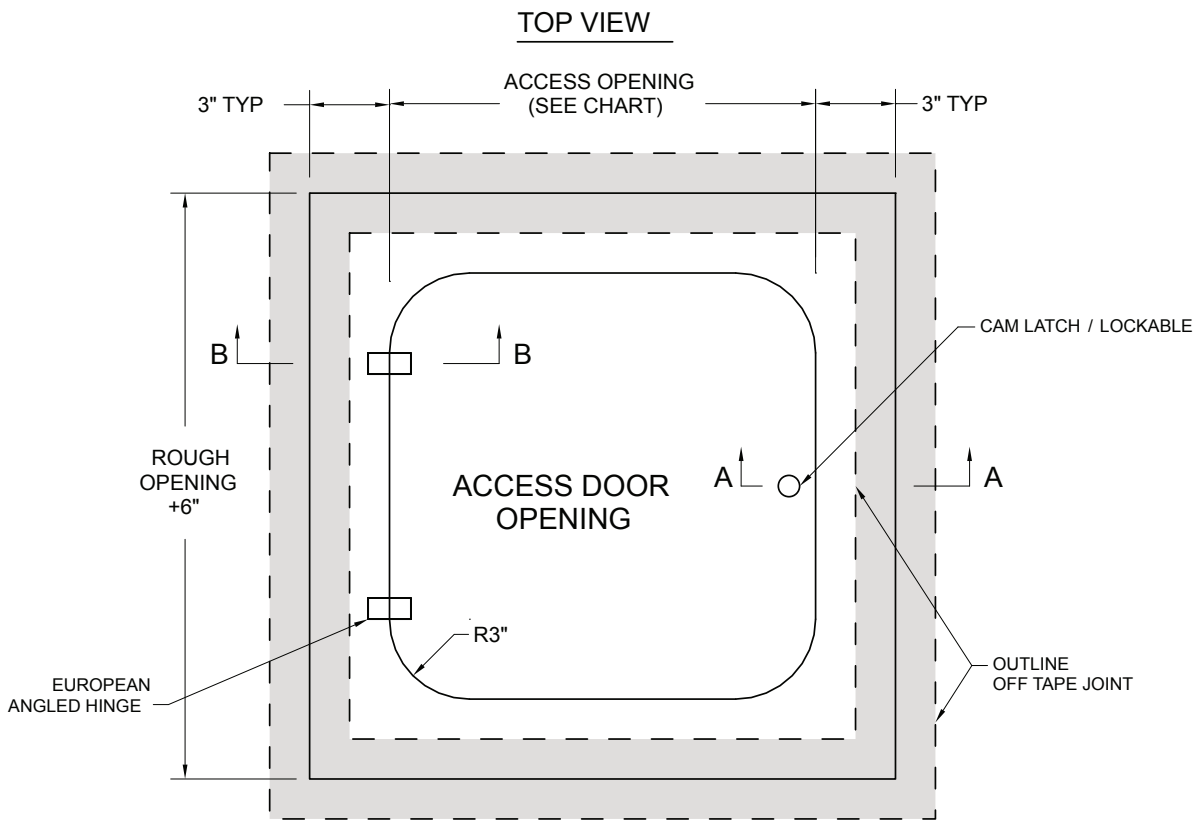


GFRG RADIUS CORNER - HINGED ACCESS PANEL

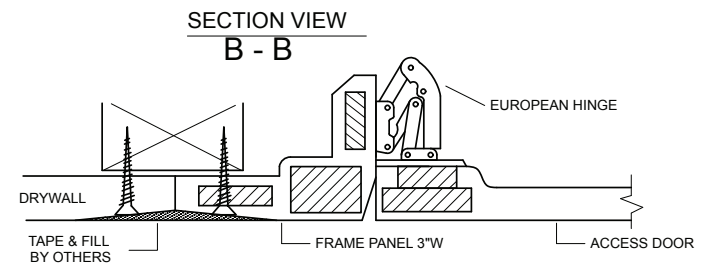
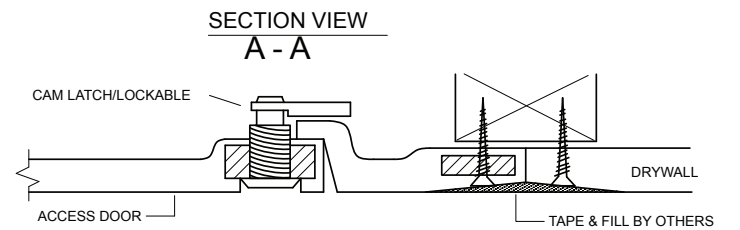
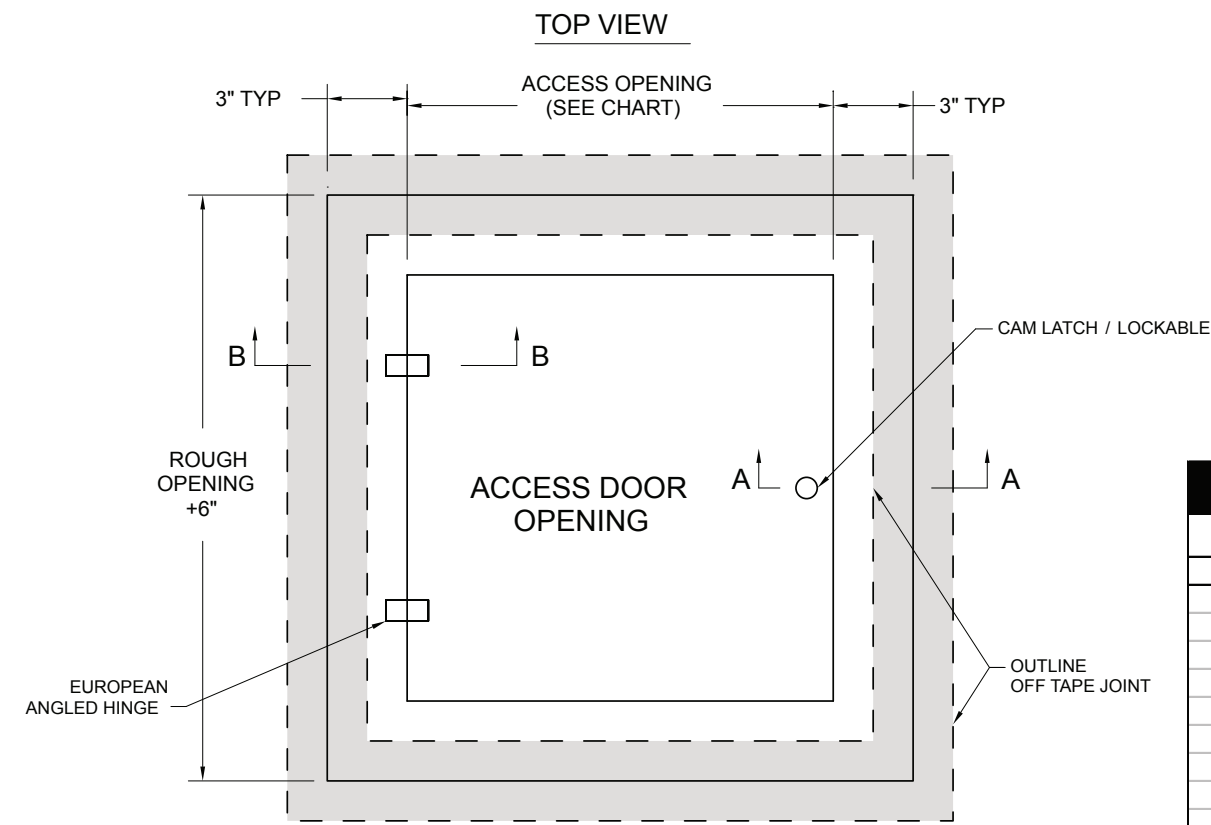


| GFRG RADIUS CORNER HINGED ACCESS PANEL | | |
|--|---------------------------------|--------------------|
| AVAILABLE PRODUCT ITEMS SCHEDULE | | |
| STOCK # | HINGED ACCESS DOOR OPENING SIZE | ROUGH OPENING SIZE |
| HG-RC-580008 | 8" x 8" | 14" x 14" |
| HG-RC-580009 | 9" x 9" | 15" x 15" |
| HG-RC-580012 | 12" x 12" | 18" x 18" |
| HG-RC-580016 | 16" x 16" | 22" x 22" |
| HG-RC-580018 | 18" x 18" | 24" x 24" |
| HG-RC-580020 | 20" x 20" | 26" x 26" |
| HG-RC-580024 | 24" x 24" | 30" x 30" |
| HG-RC-580030 | 30" x 30" | 36" x 36" |
| HG-RC-580036 | 36" x 36" | 42" x 42" |
| HG-RC-580042 | 42" x 42" | 48" x 48" |
| HG-RC-580048 | 48" x 48" | 54" x 54" |
| HG-RC-581216 | 12" x 16" | 18" x 22" |
| HG-RC-581224 | 12" x 24" | 18" x 30" |

CUSTOM SIZES AVAILABLE.
NEOPRENE GASKET AVAILABLE UPON REQUEST.

| | | | | |
|--|---|---|--|--------------------------|
| THIRD ANGLE PROJECTION | CASTLE Access Panels & Forms Inc. | CASTLE ACCESS PANELS & FORMS INC. 173 Adesso Drive, Unit 2, Concord ON L4K 3C3 Phone (905)738-8089 Fax (905)760-9234 inquiries@castleaccesspanels.com www.CastleAccessPanels.com | | DESIGNED: DATE: |
| | | SCALE: UNITS: CUSTOMER: PROJECT: QTY: | | APPROVED: J. R. DATE: |
| TITLE: RADIUS CORNER HINGED ACCESS PANEL | | DWG NO: | | SHEET 1 OF 1 |

GFRG SQUARE CORNER HINGED ACCESS PANEL



| GFRG SQUARE CORNER HINGED ACCESS PANEL | | |
|--|---------------------------------|--------------------|
| AVAILABLE PRODUCT ITEMS SCHEDULE | | |
| STOCK # | HINGED ACCESS DOOR OPENING SIZE | ROUGH OPENING SIZE |
| HG-SQ-580008 | 8" x 8" | 14" x 14" |
| HG-SQ-580009 | 9" x 9" | 15" x 15" |
| HG-SQ-580012 | 12" x 12" | 18" x 18" |
| HG-SQ-580016 | 16" x 16" | 22" x 22" |
| HG-SQ-580018 | 18" x 18" | 24" x 24" |
| HG-SQ-580020 | 20" x 20" | 26" x 26" |
| HG-SQ-580024 | 24" x 24" | 30" x 30" |
| HG-SQ-580030 | 30" x 30" | 36" x 36" |
| HG-SQ-580036 | 36" x 36" | 42" x 42" |
| HG-SQ-580042 | 42" x 42" | 48" x 48" |
| HG-SQ-580048 | 48" x 48" | 54" x 54" |

CUSTOM SIZES AVAILABLE.
NEOPRENE GASKET AVAILABLE UPON REQUEST.

| | | | | |
|--|---|---|--|--------------------------|
| THIRD ANGLE PROJECTION | CASTLE Access Panels & Forms Inc. | CASTLE ACCESS PANELS & FORMS INC. 173 Adesso Drive, Unit 2, Concord ON L4K 3C3 Phone (905)738-8089 Fax (905)760-9234 inquiries@castleaccesspanels.com www.CastleAccessPanels.com | | DESIGNED: DATE: |
| | | SCALE: UNITS: CUSTOMER: PROJECT: QTY: | | APPROVED: J. R. DATE: |
| TITLE: SQUARE CORNER HINGED ACCESS PANEL | | DWG NO: | | SHEET 1 OF 1 |